



SCHOOL OF MEDICINE
DEPARTMENT OF EMERGENCY MEDICINE



**Stronger
Together**



Executive Summary

Chair, Department of Emergency Medicine
Indiana University School of Medicine

Spring 2026



The Opportunity

Indiana University School of Medicine seeks a visionary physician leader and scholar to serve as chair of the Indiana University School of Medicine Department of Emergency Medicine. This national search presents an opportunity to lead a department with a large, high-acuity clinical platform; a deep education mission spanning medical students, residents and fellows; and research programs aimed at improving emergency care in Indiana and beyond.

The department sits at the intersection of a statewide medical school, major academic and community clinical partners, and emergency care environments that include adult, pediatric, safety-net, prehospital and community settings. Its footprint includes three Level I trauma training sites, verified adult and pediatric burn expertise, comprehensive stroke care, medical toxicology, simulation, point-of-care ultrasound, emergency medical services, pediatric emergency medicine and emergency care research.

The next chair will be positioned to guide a nationally relevant department through a period of continued growth, alignment and innovation. The role calls for a leader who can support faculty and trainee success, strengthen clinical operations, expand scholarship and funded research, and advance a welcoming learning and working environment for all members of the department.

Leadership agenda for the next chair:

- Set a compelling vision for academic emergency medicine across clinical care, education, research and service.
- Recruit, retain, mentor and develop faculty, staff, trainees and advanced practice providers across career stages.
- Grow extramurally funded research and interdisciplinary team science in acute care, emergency systems and outcomes.
- Advance clinical quality, operational excellence and patient-centered emergency care across academic, pediatric, safety-net and community settings.
- Strengthen student, resident and fellow education while deepening faculty development, wellness and professional growth.
- Build partnerships across IU School of Medicine, Indiana University Health, Eskenazi Health, Riley Children's Health and statewide community partners.

Indiana University School of Medicine at a Glance

Indiana University School of Medicine is a statewide, research-intensive medical school with a large clinical education platform and partnerships that serve communities throughout Indiana. The school data for 2025-2026 displays a broad academic mission across education, research and clinical training.

Largest MD program in the U.S. Nine-campus statewide medical education footprint	\$547.7 million Total grants and awards in 2025
\$233.4 million National Institutes of Health funding awarded in 2025	No. 15 NIH funding rank among U.S. public medical schools
1,459 Statewide medical students	1,448 Residents and fellows across graduate medical education

The school includes 24 academic departments, a statewide MD program and extensive graduate medical education. It has 121 accredited graduate medical education programs, 66 other graduate medical education programs, 3,707 full-time faculty and 2,374 full-time staff.

The research environment provides an important platform for the next chair. In 2025, IU School of Medicine reported more than \$547 million in total grants and awards and more than \$233 million in National Institutes of Health awards. Blue Ridge Institute for Medical Research rankings placed the school No. 32 among all U.S. medical schools and No. 15 among U.S. public medical schools for NIH funding.

Department of Emergency Medicine

The Indiana University School of Medicine Department of Emergency Medicine integrates patient care, education, discovery and service across a broad emergency care network. Faculty practice and teach in academic, pediatric, safety-net and community emergency departments, creating a platform for clinical education and scholarship across the full spectrum of emergency care.

The department organizes the academic work through six divisions: emergency ultrasound; out-of-hospital care, including emergency medical services; medical simulation; medical toxicology; pediatric emergency medicine; and research. Fellowship offerings extend that platform into subspecialty training in clinical operations, disaster medicine, emergency ultrasound, emergency medical services, medical simulation, medical toxicology, motorsports medicine, pediatric emergency medicine and pediatric emergency ultrasound.



The department's clinical sites include Eskenazi Hospital, IU Health Methodist Hospital, IU Health North Hospital, Riley Children's Health at IU Health North, IU Health Fishers Hospital, IU Health Tipton Hospital, IU Health West Hospital and Riley Hospital for Children. The breadth of these environments supports academic, quaternary, pediatric, safety-net and community experiences.

Clinical and training environment

The department's Indianapolis residency environment includes three Level I learning sites and more than 250,000 emergency department visits annually across its primary training system.

Clinical site	Platform strengths	Search relevance
IU Health Methodist Hospital	Level I Trauma Center, tertiary referral environment, toxicology, trauma, transport, comprehensive stroke center and Indiana Poison Center, and approximately 85,000 emergency department visits each year.	Adult high-acuity care, stroke, referral environment, toxicology, trauma, transport and operational innovation.
Eskenazi Hospital	Adult Level I Trauma Center and verified adult burn expertise, with approximately 115,000 emergency department visits each year.	Safety-net emergency care, community health, burn and trauma, health equity and population health opportunities.
Riley Hospital for Children	Pediatric Level I Trauma Center and pediatric burn program, quaternary pediatric referral environment and approximately 60,000 emergency department visits each year.	Pediatric emergency medicine, pediatric trauma, burn care and pediatric subspecialty collaboration.
Simulation, community and pre-hospital settings	IU Health Simulation Center at Fairbanks Hall includes approximately 30,000 square feet of simulation space; department sites also include community emergency departments and emergency medical services partnerships.	Procedural learning, interprofessional training, systems-based care, community emergency medicine and EMS scholarship.

Education and Training

Education is central to the department's identity. The statewide emergency medicine clerkship instructs every IU School of Medicine medical student and has earned the school's Outstanding Clerkship award eight times since its inception in 2004.

Graduate medical education includes three Accreditation Council for Graduate Medical Education-accredited residency programs: a categorical emergency medicine residency in Indianapolis, a combined emergency medicine and pediatrics residency in Indianapolis, and a categorical emergency medicine residency in Bloomington. The Indianapolis categorical emergency medicine residency was established in 1976 and accepts 21 residents each year.

Fellowship training includes three Accreditation Council for Graduate Medical Education-accredited fellowships in medical toxicology, out-of-hospital care and pediatric emergency medicine, as well as six subspecialty fellowships in clinical operations and administration, disaster medicine, emergency ultrasound, medical simulation, motorsports medicine and pediatric emergency ultrasound.

Educational strengths to leverage

- Statewide medical student reach through an emergency medicine clerkship that serves every IU School of Medicine student.
- Longstanding Indianapolis residency training, with three downtown Level I sites and a high-volume emergency care environment.
- A combined emergency medicine and pediatrics pathway that supports dual-specialty training and pediatric emergency expertise.
- A Bloomington residency platform that extends the department's residency education footprint.
- Nine fellowship programs that support subspecialty expertise, faculty development and academic emergency medicine leadership.

Research, Scholarship and Innovation

The Department of Emergency Medicine's research includes translational research, active clinical research and structured research education. Research topics include venous thromboembolism, heart failure and right ventricle dysfunction, pain, anxiety, suicide-related care, mild traumatic brain injury, cardiac arrest, atrial fibrillation, residency education and emergency medical services.

This research base sits within a schoolwide environment that reported more than \$547 million in total grants and awards in 2025 and more than \$233 million in National Institutes of Health awards. For the next chair, that environment creates opportunities to expand team science, accelerate externally funded research and connect emergency care questions to broader school and health system priorities.

The chair will be expected to foster scientific collaboration, mentor faculty and trainees, support interdisciplinary research programs and advance clinical models that improve acute care outcomes. Potential areas of continued growth include emergency care systems, neurological emergencies, data-enabled research, health equity, pre-hospital care, pediatric emergency medicine, toxicology, simulation and implementation-focused scholarship.



Strategic opportunities

- Build a clear, departmentwide research strategy that aligns faculty strengths with schoolwide and clinical partner priorities.
- Support early-career investigators, clinician-scholars and cross-disciplinary teams through mentorship, protected time and infrastructure.
- Translate high-volume emergency care questions into scholarship that improves outcomes for patients and communities.
- Use the department's clinical diversity across academic, safety-net, pediatric, community and pre-hospital settings to generate nationally relevant evidence.

Leadership Profile

- The successful candidate will be an accomplished physician leader and scholar with the academic record, leadership experience and collaborative orientation needed to lead a large department in a complex academic health environment.
- MD, MD/PhD or equivalent credentials and qualifications that support appointment at the rank of professor with tenure.
- A strong record of extramurally funded research, scholarly impact and interdisciplinary collaboration.
- Demonstrated commitment to clinical excellence, patient-centered care and operational leadership.
- A record of teaching, mentoring and developing faculty, residents, fellows, students and staff.
- Experience building inclusive, welcoming learning and working environments.
- Exceptional communication, interpersonal and administrative skills.

Indianapolis and Indiana

Indianapolis is the capital and most populous city in Indiana, with a metropolitan setting that combines a strong corporate and life sciences base with professional sports, arts venues, parks, trails, dining and cultural amenities. Indianapolis International Airport was named Best Airport in North America by Airports Council International for a 14th consecutive year, supporting accessible national travel for candidates, collaborators and visiting speakers.

IU School of Medicine also provides dual career services to support relocation needs for new faculty.

Application timing

The priority review deadline is July 8, 2026. Application materials include a letter of interest and curriculum vitae. The position will remain open until filled, and application materials should be submitted through the IU application portal or designated search website.

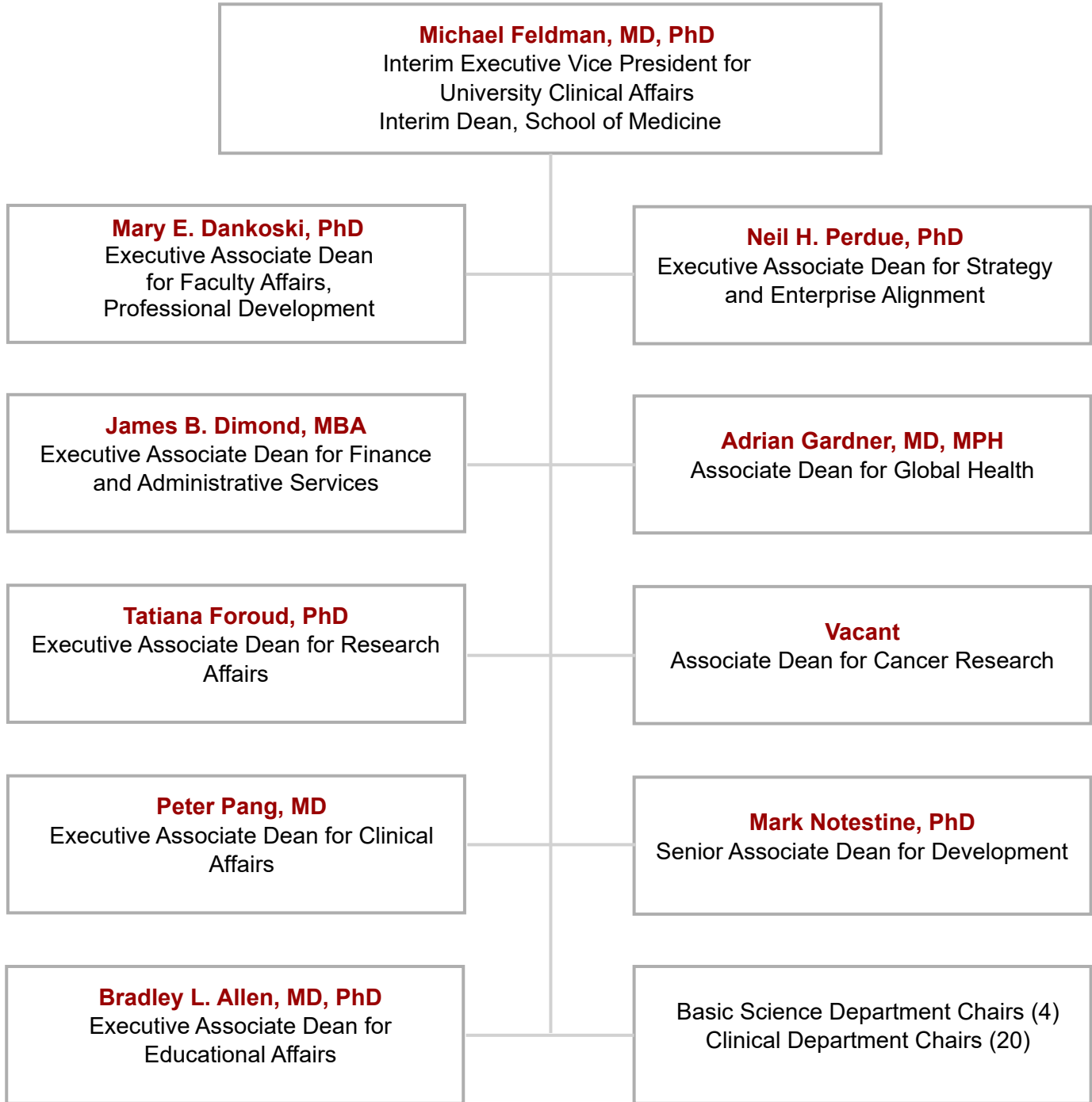
- Nomination: [Submit a nomination](#)
- Application: [Apply online through IU PeopleAdmin](#)
- Contact: iusmhire@iu.edu

Appendices

- A. IUSM Leadership Organizational Chart
- B. IU Health Organization Overview



IU SCHOOL OF MEDICINE LEADERSHIP ORGANIZATIONAL CHART





Organization Overview

About Indiana University Health

IU Health is the largest health system in Indiana with nearly 40,000 team members, 15 hospitals, \$8.64 billion in operating revenue and a statewide market share of 30 percent. The system’s programs in cancer, cardiovascular, neuroscience, orthopedics, pediatrics and transplants have received national recognition for quality patient care. IU Health, in partnership with the Indiana University School of Medicine, created three institutes – cardiovascular, cancer and neuroscience - that bring together highly skilled physicians, researchers, and educators into close collaboration to provide world-class care and improve the health of patients and communities across Indiana. IU Health Simon Cancer Center is associated with IU Melvin and Bren Simon Cancer Center, Indiana’s only National Cancer Institute (NCI)designated comprehensive cancer center.

IU Health: A national leader in healthcare

BEST REGIONAL HOSPITALS
USNews
INDIANAPOLIS METRO
RECOGNIZED IN 12 TYPES OF CARE
2025-2026

IU HEALTH MEDICAL CENTER RANKED AS BEST REGIONAL HOSPITAL IN THE INDIANAPOLIS METRO REGION BY U.S. NEWS & WORLD REPORT (TIE)

BEST CHILDREN'S HOSPITALS
USNews
RANKED IN 11 SPECIALTIES
2024-2025

PROUD TO BE RANKED IN **11 OUT OF 11** PEDIATRIC SPECIALTIES

Riley Children's Health
Indiana University Health

1.8 million OUTPATIENT VISITS

114,000 ADMISSIONS

39,000+ TEAM MEMBERS

3,300 ACTIVE PHYSICIAN TEAM MEMBERS

\$1.1 billion COMMUNITY BENEFIT & INVESTMENT

3,948 NUMBER OF VOLUNTEER HOURS

15 hospitals across Indiana

7 hospitals have achieved Magnet status—the gold standard for nursing excellence.

9 facilities have achieved Pathway to Excellence Designation—providing the very best patient care.

IN PARTNERSHIP
INDIANA UNIVERSITY

Medicine | Nursing | Pharmacy
Public Health | Social Work

Explore inspiring and meaningful careers.
iuhealth.org/careers

IU Health is an independent 501(c)(3) organization, working primarily in partnership with the Indiana University School of Medicine (IUSM), but also with other allied health schools including IU School of Nursing, IU Schools of Public Health (Bloomington and Indianapolis) and others. IUSM, one of the nation’s leading medical schools, partners with IU Health to train physicians, blending breakthrough research and treatments with the highest quality of patient care. IU Health also works closely with other Indiana University schools, including nursing and public



health amongst others. IU Health employs nearly 4,000 physicians and over 1,300 advanced practice providers through its physician groups. Continued strategic alignment across the system has enhanced IU Health's focus on research, elevated quality and safety and supported further expansion into the Indianapolis metropolitan area, where more than 2 million Hoosiers reside.

In Indianapolis, IU Health includes three major downtown hospitals: IU Health Methodist Hospital, IU Health University Hospital and Riley Hospital for Children at IU Health. These facilities serve as the system's academic health center (AHC) and provide nationally recognized care to patients from across Indiana and beyond. The system's regional and statewide facilities serve as referral resources to the AHC and facilitate seamless, high- quality patient care throughout Indiana. In addition to the AHC, IU Health has 12 community hospitals across the state, and a network of strategic partnerships, joint ventures and initiatives, including urgent care centers, ambulatory operations, philanthropic foundations and a health plan. The system's statewide operations provide Hoosiers with access to advanced clinical care without having to travel to Indianapolis.

Since 1924, Riley Children's Health has consistently raised the bar for excellence in pediatric healthcare. As a comprehensive children's health system serving the state of Indiana, the Midwest, and beyond, Riley Children's offers nationally recognized care in a footprint that meets patients, and their families, close to home. Riley Children's operates two hospitals, with responsibility for 475 beds, and provides outpatient care across 18 communities by a robust primary and specialty care network. Riley Children's Health is committed to using our expertise and resources to improve the health and well-being of families close to home, advancing care globally, and ensuring a respectful and supportive environment for patients, families, and team members alike. Riley Children's is the comprehensive pediatric health system of Indiana University Health, the state's largest health system, and its faculty are members of IU School of Medicine, providing patients access to groundbreaking research and innovative treatments to complement high-quality patient care.



IU Health is comprised of three regions:

Region	Facility
Metro Region	<ul style="list-style-type: none">• Adult Academic Health Center• IU Health North Hospital• IU Health Fishers Hospital• IU Health West Hospital• IU Health Riley Children's Hospital
North Region	<ul style="list-style-type: none">• IU Health Arnett Hospital• IU Health Frankfort Hospital• IU Health White Memorial Hospital• IU Health Tipton Hospital• IU Health Ball Memorial Hospital• IU Health Fort Wayne• IU Health Jay Hospital
South Region	<ul style="list-style-type: none">• IU Health Bedford Hospital• IU Health Bloomington Hospital• IU Health Morgan• IU Health Paoli Hospital

IU Health Medical Group

Launched in January 2025, the new IU Health Medical Group unites the system's physician groups and practices into one statewide medical group with more than 2,700 physicians and more than 1,100 advanced practice professionals. IU Health Medical Group functions as a cohesive healthcare provider that coordinates care across the system and optimizes support structures and distribution channels for clinical care, helping IU Health deliver on its vision of improving the health of Indiana.

In the metropolitan Indianapolis region, IU Health Medical Group employs both community-based providers and academic faculty, functioning as the faculty practice plan of the IU School of Medicine. It is one of the fastest-growing, comprehensive, multi-specialty practice groups in the state.



New Academic Health Center

IU Health is designing a world-class medical campus that combines the services of IU Health Methodist and IU Health University hospitals into one location with inpatient and observation beds, a full-service outpatient center and a medical education building on site.



Our strong partnership with the Indiana University School of Medicine will be enhanced with their construction of the medical education and research building, which will sit directly east of the new hospital. The close proximity of a medical education building and will further support delivery of cutting-edge medicine and research-based care. As the only academic health center in our state, this partnership sets us apart and emphasizes our programs as destinations for care. The new facility will allow us to continue fulfilling that role and advancing our practice.

[*Learn more about how we are building our promise and creating a new model of care for our community.*](#)

New Indy Health District

The Indy Health District is a visionary project in downtown Indianapolis designed to improve the health, vitality and economic mobility of the community around the \$4.3 billion new IU Health downtown Indianapolis hospital campus now under construction. The large geographic area will house community informed initiatives, programs and places focused on improving health outcomes for people who live, work and play near the new hospital. The Health District will demonstrate how investments in initiatives like affordable housing, public safety, improving education and workforce development options, and increasing access to living wage jobs can extend life expectancy in underserved communities. This metric is critical, because life expectancy in this area lags by up to 20 years compared to communities 20 miles north of the District. Recognizing the diverse factors that affect a person's health and well-being, IU Health, community organizations and other anchor institutions located in the Indy Health District are creating an innovative district where people, organizations, and businesses collaborate to support better lives for residents, patients, workers and visitors. By targeting social determinants of health such as housing, education, employment and access to healthy food, the Health



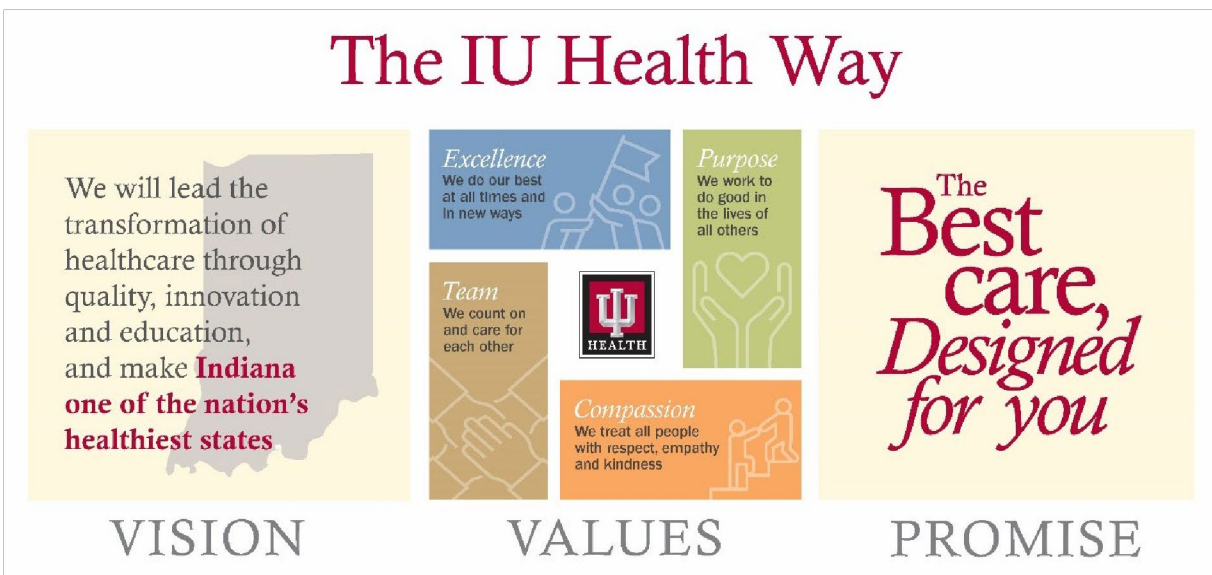
District will promote, facilitate and sustain the vitality of the neighborhood and the people who live, work, learn and heal there. And by pioneering an approach to holistic community building, the Health District will offer a model of hope for other neighborhoods that need it.

The IU Health Way: Vision, Values and Promise

IU Health has been on a path to create a healthy culture for all. The IU Health Way describes our shared culture and how we aspire to treat each other, our patients and the communities we serve.

Our vision: To make Indiana one of the nation's healthiest states Our promise: The Best Care, Designed for You Our values:

- **Purpose:** We work to do good in the lives of all others
- **Excellence:** We do our best at all times and in new ways
- **Compassion:** We treat all people with respect, kindness, and empathy
- **Team:** We count on and care for each other



Community Benefit

IU Health is a nonprofit health system dedicated to improving the health and quality of life in the communities we serve. We invest time and resources in organizations, programs and initiatives that focus on priority health needs that complement our mission and benefit all members of the community. **In 2023, IU Health invested over \$854 million in the communities we serve.**

Additionally, IU Health recently made an unprecedented investment in public health, including \$500 million for health-related community development, and doubling the size of the IU Health



Community Impact Investment Fund to \$200 million. The organization is also making significant investments in initiatives to address social determinants of health and health equity. In addition to addressing the societal challenges that propel health care costs and outcomes, IU Health understands that truly bending the cost curve requires a long-term commitment to values-based care. Reducing health care costs for patients requires all-in commitment from providers, insurers, and policymakers. IU Health is proud to be at the leading edge of this effort.

To learn more about our strategies and investments in our local communities please visit

[Community Benefit | IU Health.](#)

Recognition and Awards

IU Health and Riley Children's Health have achieved significant success across multiple clinical programs that have resulted in state and national recognition:

- IU Health is part of an elite group of hospitals with Magnet designation. IU Health has seven magnet designated hospitals. To achieve this prestigious designation, hospitals must demonstrate an exceptional practice environment for nurses and meet high standards for quality care and experience. Fewer than 7% of U.S. hospitals are Magnet hospitals.
- Nurses at IU Health hospitals have been recognized for their excellence by the world's largest and most prestigious nurse credentialing organization, the American Nurses Credentialing Center (ANCC). IU Health has nine Pathway to Excellence (trademark) designations.
- IU Health Medical Center is ranked No. 1 in Indiana by *U.S. News & World Report* with the Indianapolis Metro Region earning recognition in 15 types of care.
- Riley Children's Health is honored to be ranked as one of the top 50 children's hospitals in the country by *U.S. News & World Report*. Nationally ranked in 11 out of 11 pediatric specialties in 2024-2025, Riley Children's is also recognized as Indiana's best children's hospital.
- IU Health Transplant is the only comprehensive transplant program in Indiana and one of the nation's top thirty solid-organ transplant centers by volume.
- IU Health Simon Cancer Center is a partner to IU Melvin and Bren Simon Comprehensive Cancer Center, Indiana's only National Cancer Institute designated comprehensive cancer center, with more than 250 physician researchers leading the way to new treatments.
- An internationally recognized Alzheimer's and Dementia program pioneering diagnostic and care pathways in imaging, cognitive evaluation, genetic assessment and biomarker identification.



Commitment to Excellence

At IU Health, we believe in the power and strength of bringing together different perspectives to improve the health of our communities and offer meaningful career opportunities. We are dedicated to connecting individuals from various backgrounds to collaboratively solve complex problems with excellence. We strive to build trust among our team members, enhance patient satisfaction, reduce healthcare disparities, and foster community engagement. Our unique differences and backgrounds make us stronger.

Through listening, learning, and acting, IU Health is committed to achieving key goals in the following areas:

- **Excellent Care:** We are dedicated to fostering trust and fairness in our care. We actively address behaviors or actions that could hinder a positive experience for our team members, patients, and guests.
- **Exceptional People:** We foster a preeminent workplace culture by nurturing empathetic team members, engaging in active listening, and living our IU Health values of Excellence, Purpose, Team and Compassion to deliver the highest standard of care.
- **Expanding Impact:** We advance exceptional care in the communities we serve by building meaningful and sustained partnerships that improve social factors and cultivate long-term positive impact.

IU Health has a strong network of team resource groups that allow team members from all backgrounds to connect around common interests and challenges, learn from one another, and grow both personally and professionally. Our team resource groups include Women's Initiative, Disability Advocacy, IU Health Pride, Culturally Inclusive Community, Veteran and Military Services, and Young Professionals.

The Community

Indianapolis, Indiana

Indianapolis is the 16th largest city in the United States, with a 2025 estimated population of just over 880,000. The Indianapolis metropolitan area, encompassing a nine-county region, has a population exceeding 2.1 million, making it one of the fastest-growing metros in the Midwest. Centrally located in Indiana, the city is often referred to as the "Crossroads of America" due to its extensive network of interstate highways—more segments intersect here than any other U.S. metro area.

Indianapolis is a dynamic and welcoming city with a thriving downtown, a flourishing tech scene, and a balanced economy anchored in healthcare, life sciences, advanced manufacturing,



logistics, and sports tourism. It is home to several major corporations including Eli Lilly and Company, Elevance Health (formerly Anthem), and Corteva Agriscience, as well as multiple fast-growing tech startups. The cost of living remains significantly below the national average, making Indianapolis an attractive place to live and work for professionals and families alike.

Indianapolis International Airport, consistently ranked among the best midsize airports in North America, offers nonstop flights to over 50 domestic and international destinations, serving more than 10 million passengers annually. The city welcomes more than 30 million visitors each year and has built a national reputation for hosting large-scale conventions and sporting events.



Indianapolis offers a diverse and affordable housing market, with options ranging from walkable downtown neighborhoods to suburban family communities and charming rural towns. Whether you're seeking an upscale urban apartment, a forever home in Carmel, Zionsville, or Fishers, or a peaceful retreat with land, the region provides ample choice and value.

The public education system includes 11 school corporations within Marion County, each offering a variety of traditional, magnet, and choice programs. Additionally, the area includes nationally recognized charter schools, faith-based institutions, International Baccalaureate (IB) programs, and career and technical education options. Parents can also explore top-rated private and independent schools in the metro area. Nearby universities include Indiana University Indianapolis, Butler University, Marian University, and University of Indianapolis—with many offering strong partnerships with the business and healthcare sectors.



Known as the Circle City, Indianapolis blends big-city amenities with small-town friendliness. From world-class sports to nationally renowned arts and culture, Indy has something for everyone. Residents enjoy access to:

- Professional sports teams including the Indianapolis Colts (NFL), Indiana Pacers (NBA), Indiana Fever (WNBA), Indy Eleven (USL Soccer), and the Indianapolis Indians (Triple-A Baseball)
- Major cultural institutions such as the Indianapolis Symphony Orchestra, Indianapolis Repertory Theatre, and the Eiteljorg Museum of American Indians and Western Art
- The Children's Museum of Indianapolis — the largest children's museum in the world
- White River State Park, offering green space, trails, and access to attractions like the Indianapolis Zoo and the Indiana State Museum
- A vibrant food scene recognized for its mix of farm-to-table dining, local breweries, and James Beard-nominated chefs

Of course, no mention of Indianapolis is complete without the Indianapolis 500, the largest single-day sporting event in the world, held annually at the iconic Indianapolis Motor Speedway. Whether you're planning to build a career, raise a family, or enjoy the energy of a city that blends progress and tradition, Indianapolis offers opportunity, affordability, and unmatched Midwestern hospitality.